

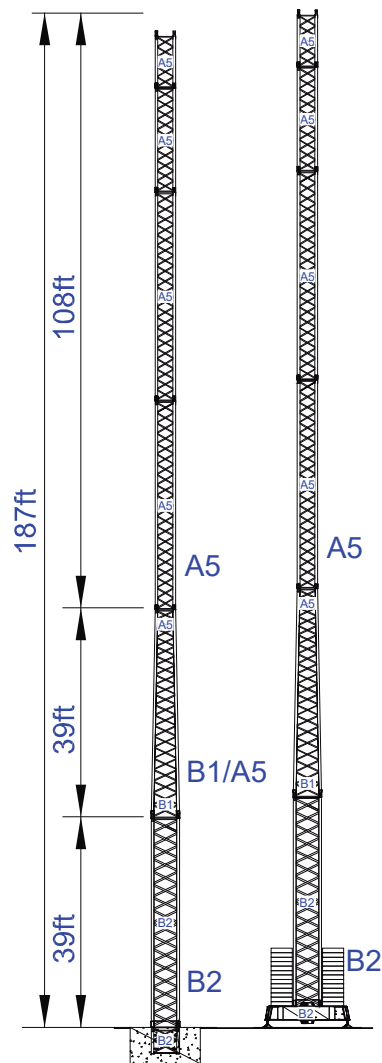
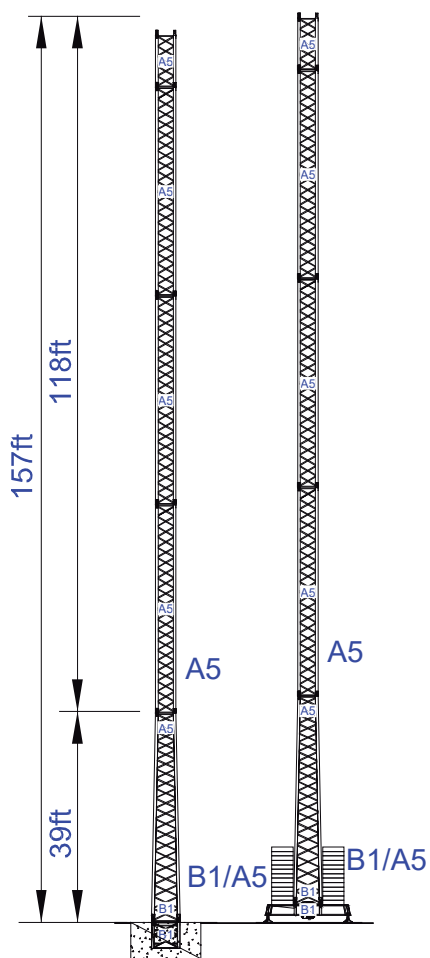
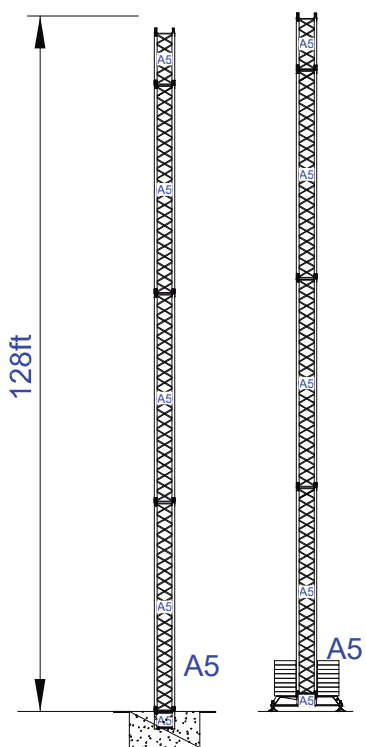
Empresa certificada no âmbito da Conceção, Fabrico e Serviço Pós-venda de Gruas Soíma e componentes

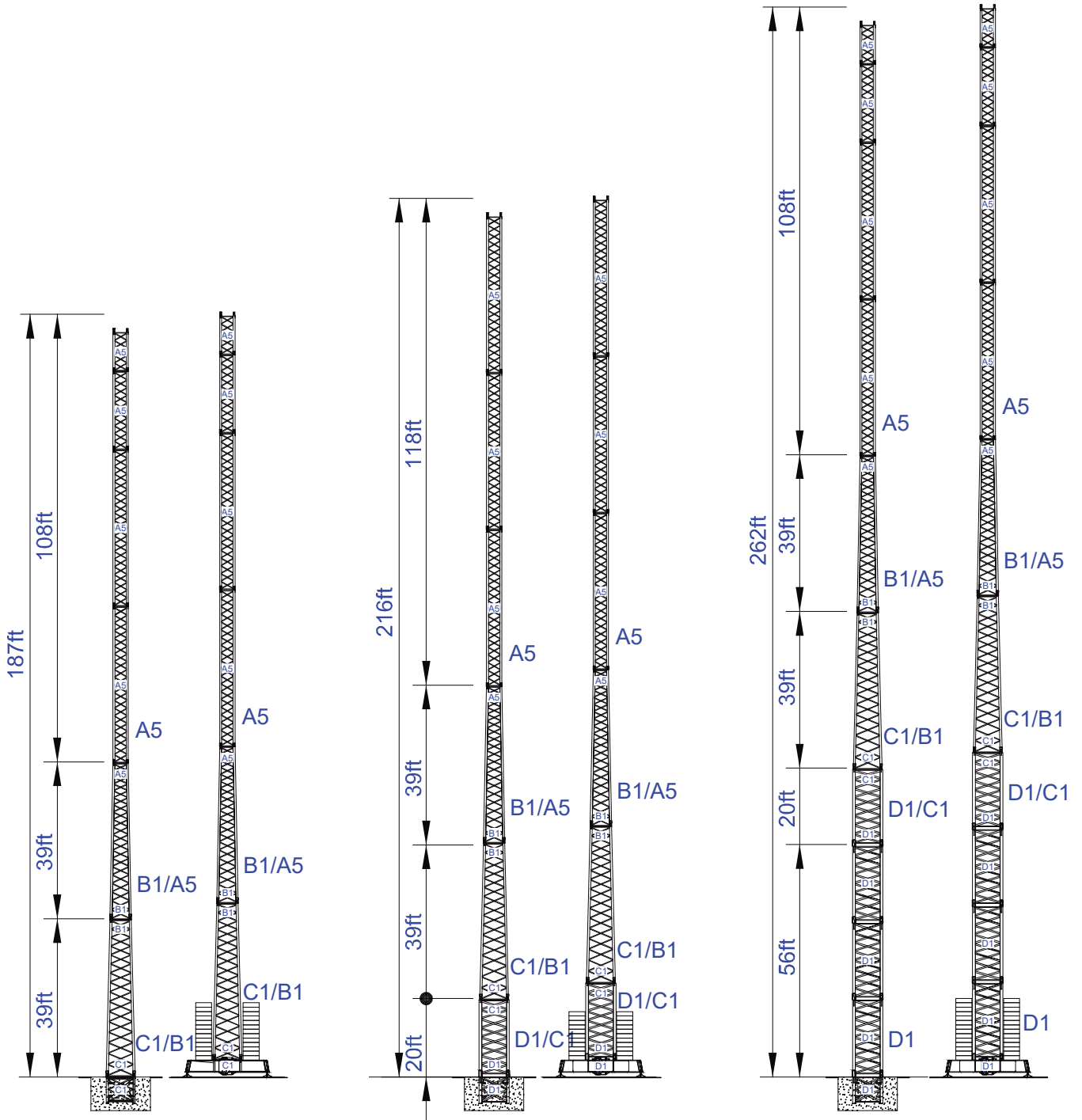
Factory & HQ

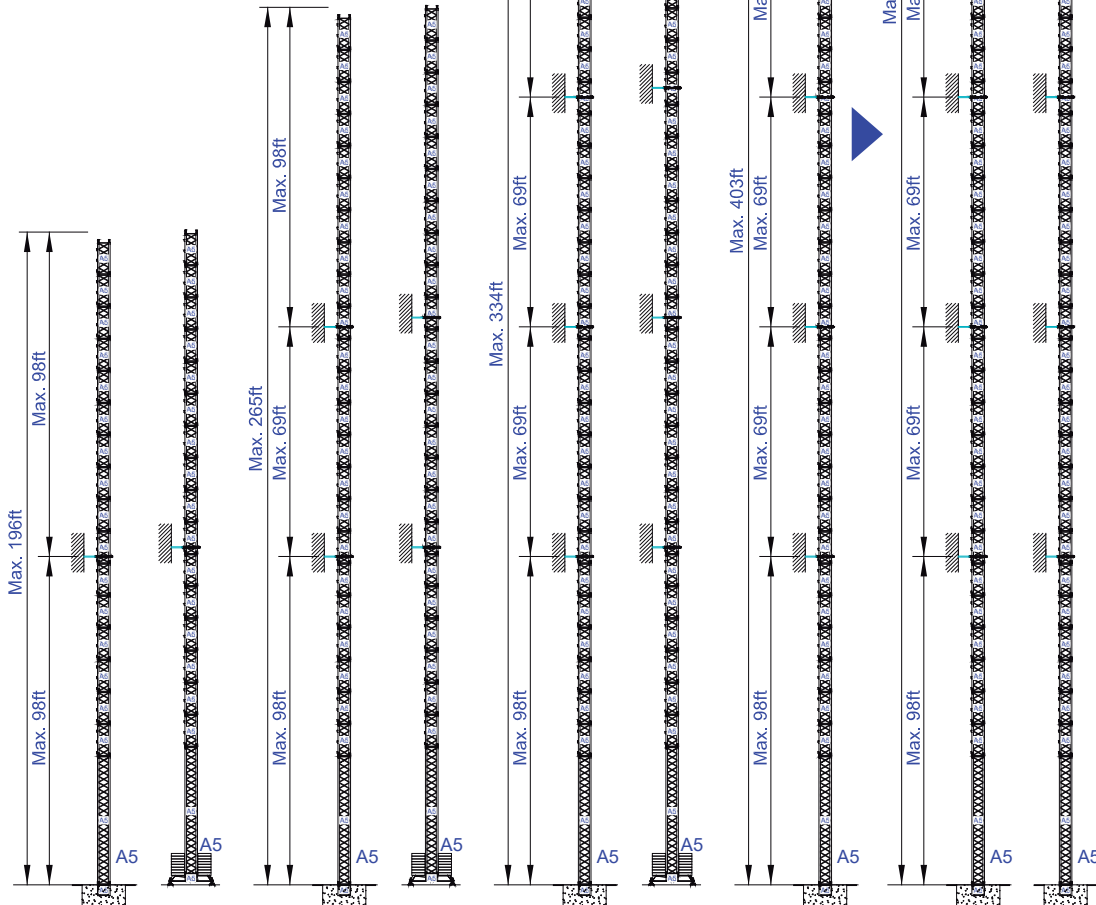
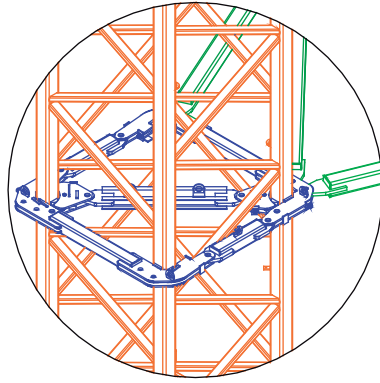
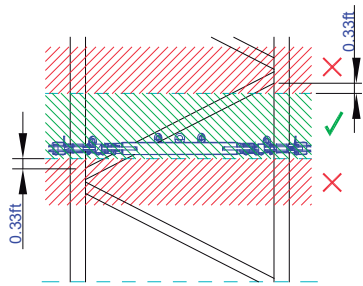
Zona Industrial de Canas de Senhorim - EN 234, 3525-040 Canas de Senhorim - Portugal

+351 232 673 530 sales@staffordtowercranes.com

staffordtowercranes.com

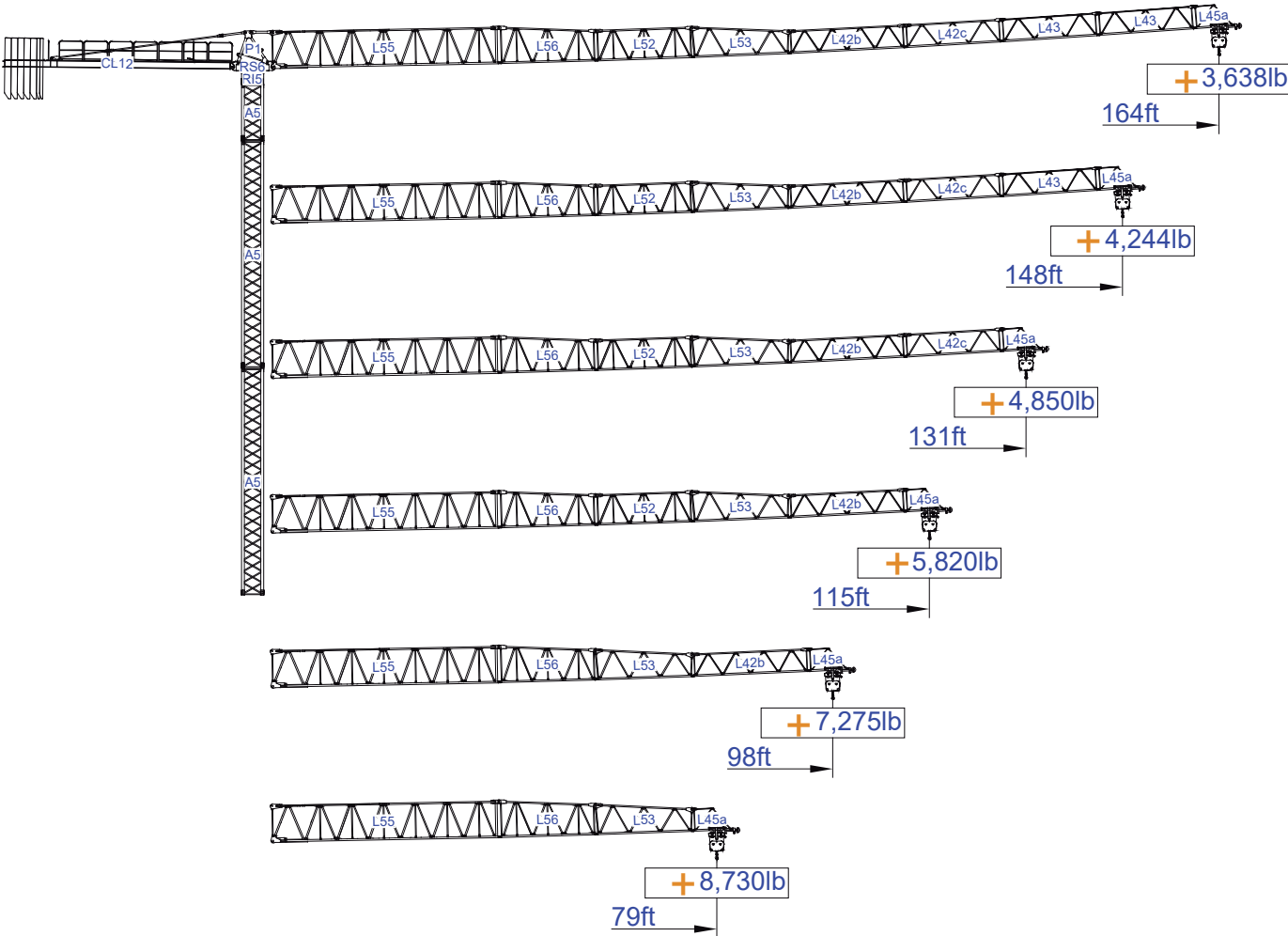






More options





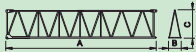


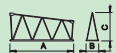

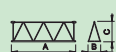




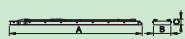


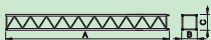

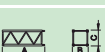

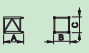
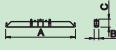
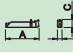
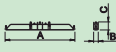
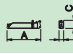
SACS

10%










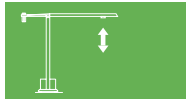
ft													
		11,020lb	5,510lb	33	49	59	79	98	115	131	148	164	ft
164	26,460lb 5x4,410lb + 2x2,205lb	57,8	107,6	5,510	5,510	5,510	5,510	5,510	5,510	4,790	4,150	3,640	lb
				11,020	11,020	11,020	8,640	6,720	5,620	4,790	4,150	3,640	
148	24,255lb 5x4,410lb + 1x2,205lb	58,9	109,5	5,510	5,510	5,510	5,510	5,510	5,510	4,900	4,240		
				11,020	11,020	11,020	8,820	6,860	5,740	4,900	4,240		
131	22,050lb 4x4,410lb + 2x2,205lb	58,4	108,6	5,510	5,510	5,510	5,510	5,510	5,510	4,850			
				11,020	11,020	11,020	8,740	6,790	5,680	4,850			
115	19,845lb 4x4,410lb + 1x2,205lb	59,6	110,9	5,510	5,510	5,510	5,510	5,510	5,510				
				11,020	11,020	11,020	8,940	6,950	5,820				
98	17,640lb 3x4,410lb + 2x2,205lb	62,0	115,4	5,510	5,510	5,510	5,510	5,510					
				11,020	11,020	11,020	9,340	7,280					
79	13,230lb 2x4,410lb + 2x2,205lb	58,3	108,6	5,510	5,510	5,510	5,510						
				11,020	11,020	11,020	8,730						
		lb											

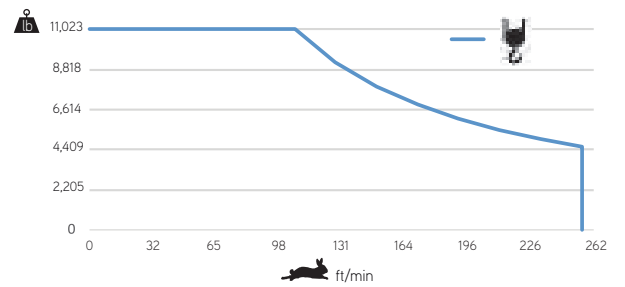
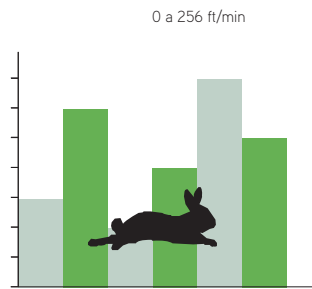


			A (ft)	B (ft)	C (ft)	lb(±5%)	
Jib		L55	39.21	3.97	8.53	6,834	
		L56	17.06	3.81	6.33	1,301	
		L52	17.06	3.81	5.41	1,179	
		L53	17.06	3.81	5.41	1,124	
		L42b	19.95	3.81	3.97	1,146	
		L42c	16.99	3.81	3.97	816	
		L43	16.73	3.81	3.97	2x573 1,146	
		L45a	6.89	3.81	3.97	265	
Head turntable		RS6 RI5	7.38	4.43	6.73	5,820	
		P1	5.45	4.00	5.64	1,587	
Counter-jib		CL12	39.38	4.10	1.84	5,644	
Counterweight		CP2	3.81	1.08	10.30	8x4,409 22,046	
		CP3	3.81	0.54	10.30	2x2,204 4,409	
Tower section		A5	39.33	3.81	3.81	6,790	
		A5	19.93	3.81	3.81	3,660	
		A5	10.24	3.81	3.81	2,183	
Climbing tower section		A5	10.14	4.54	4.54	2,293	
Foundation anchor		A5	4.18	3.81	3.81	992	
Base Chassis		A5	18.15	1.64	2.69	2,756	
			7.45	1.18	2.69	2x2,161 2,800	
						TOTAL	5,556
Base Chassis		A5s	13.49	1.64	2.69	3,77	
			6.41	1.18	2.69	2x1,279 2,557	
						TOTAL	5,093



	
	0 a 1 r.p.m. 2x29 ft/lbf
	0 a 196 ft/min 3 kW
	0 a 49 ft/min 2x3 kW

	
	0 a 256 ft/min 30 kW



Max height of hoist

More options



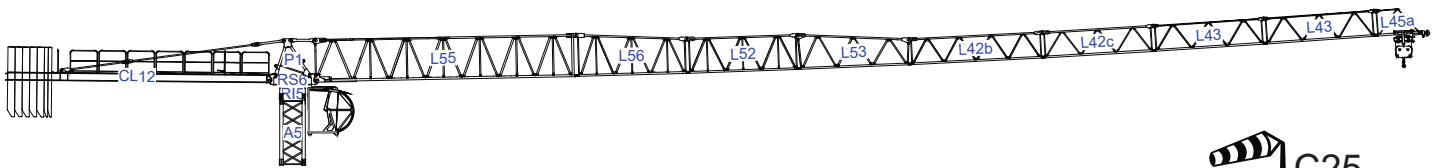
(H) Max. 433ft +



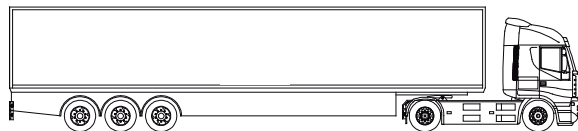
55 kVA

400 V +- 5% (50/60 Hz)

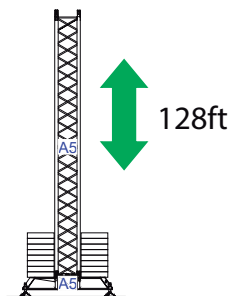
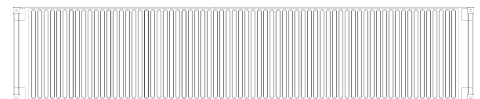
Transport



3x



3x



STF 5015

