

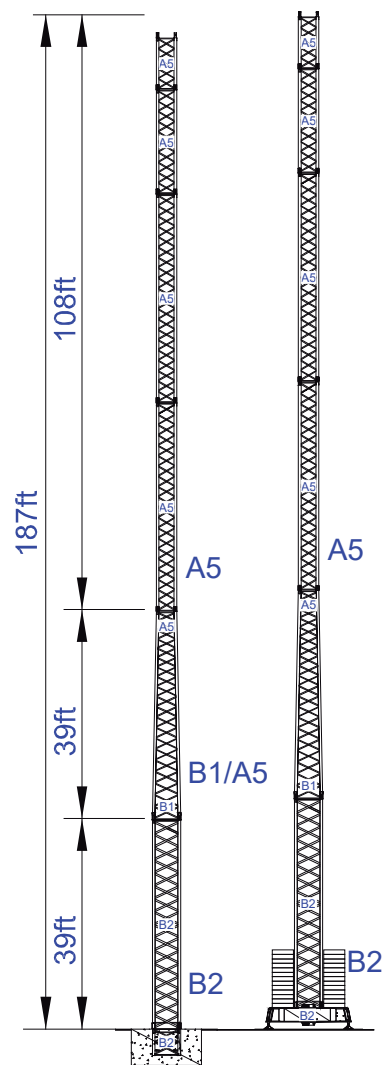
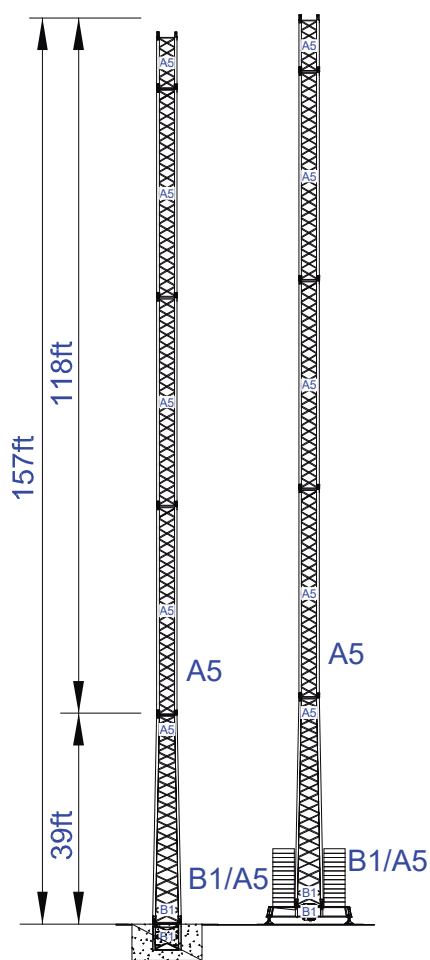
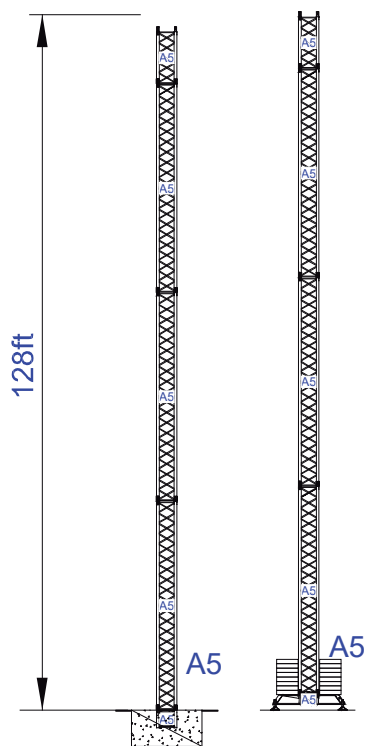
Empresa certificada no âmbito da Conceção, Fabrico e Serviço Pós-venda de Gruas Soíma e componentes

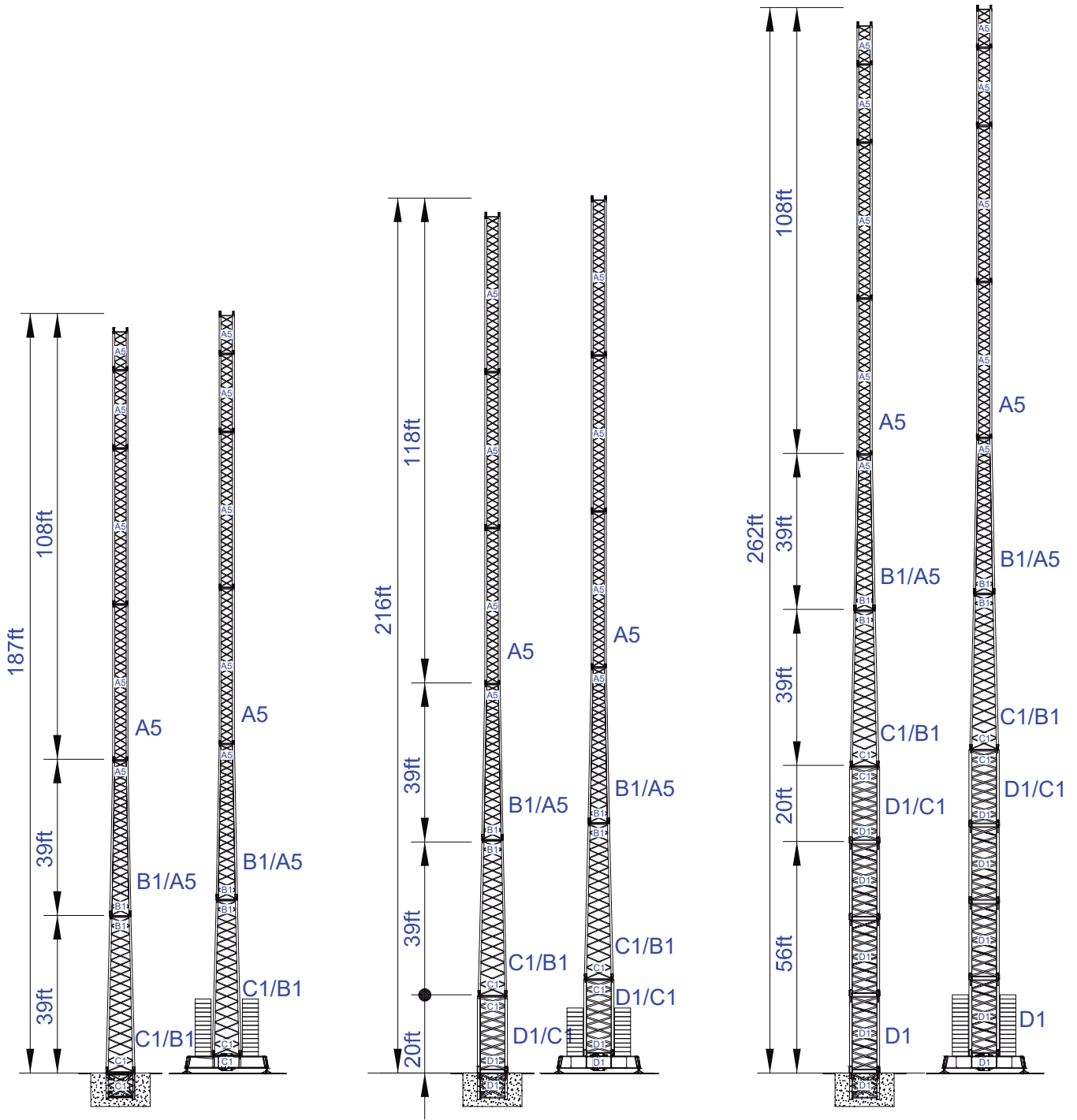
Factory & HQ

Zona Industrial de Canas de Senhorim - EN 234, 3525-040 Canas de Senhorim - Portugal

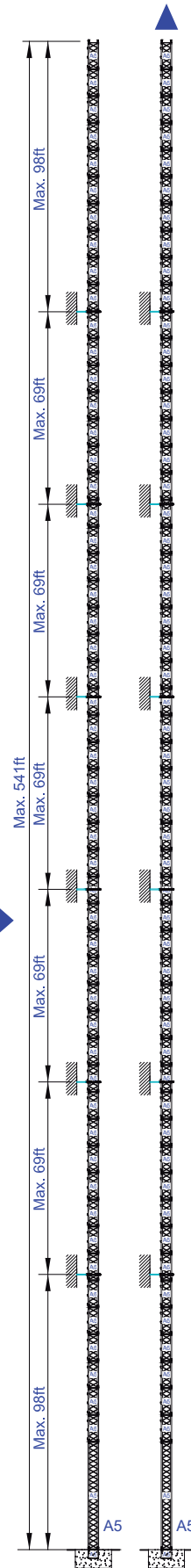
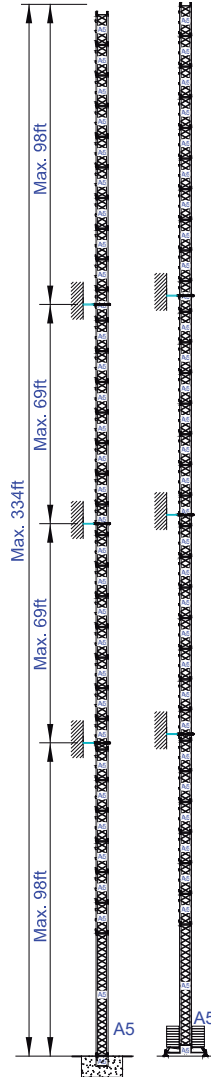
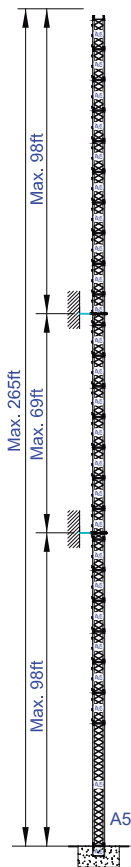
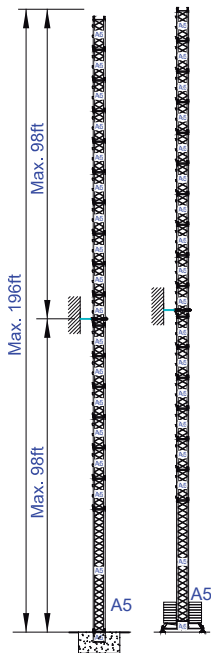
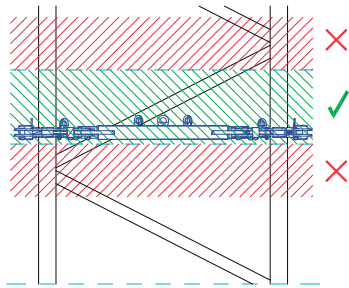
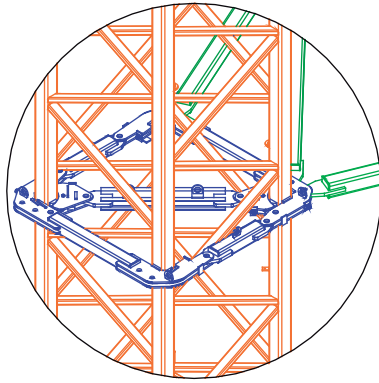
+351 232 673 530 sales@staffordtowercranes.com

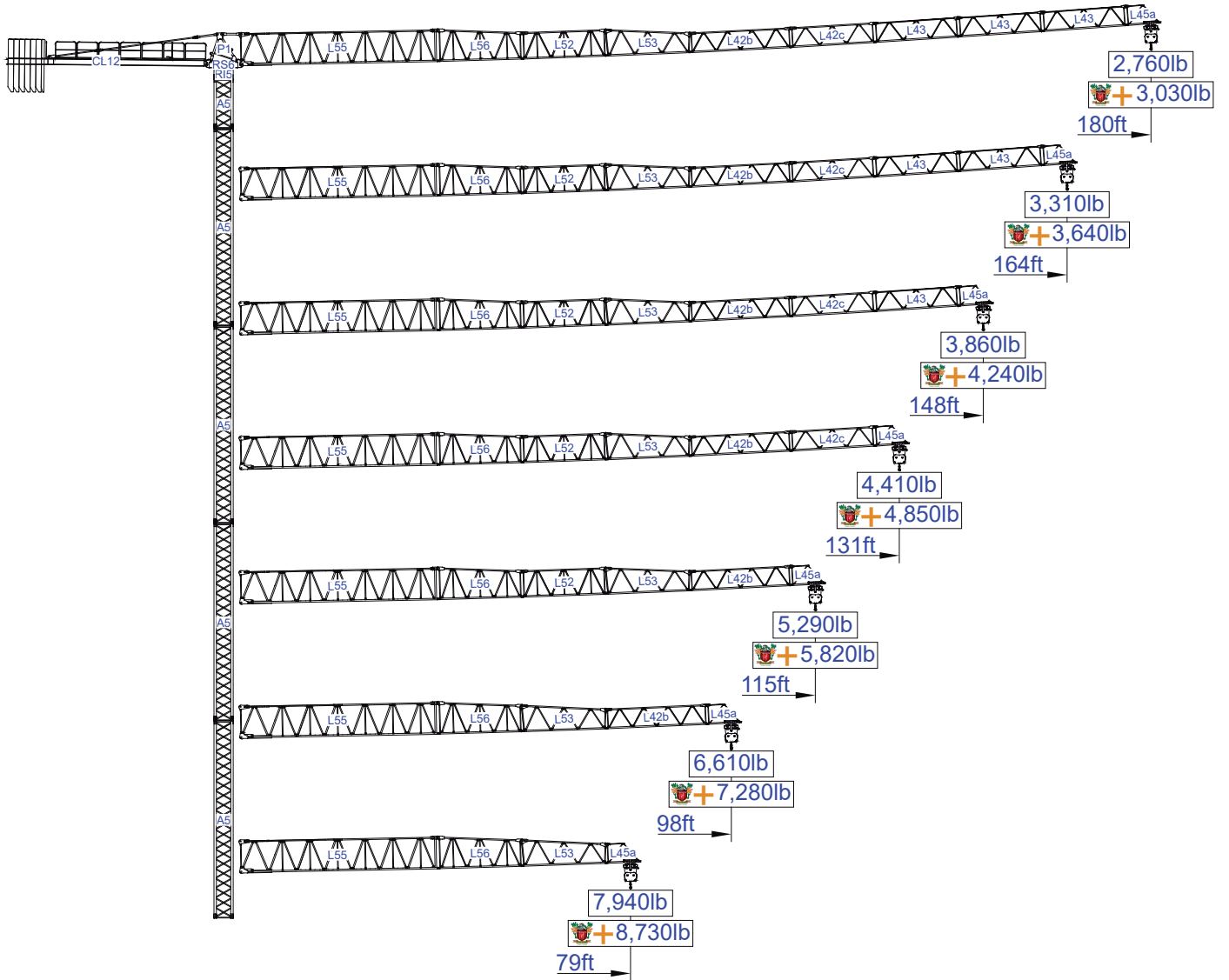
staffordtowercranes.com



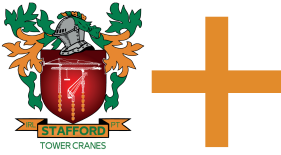






More options



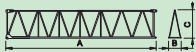


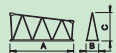

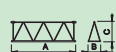







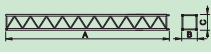

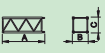
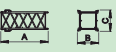
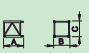
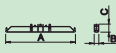
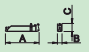
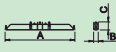
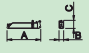


SACS 10%








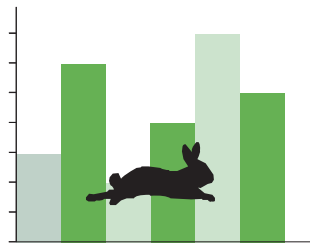
ft															ft
180	28,665lb 6x4,410lb + 1x2,205lb	54,0	101,3	33	49	59	79	98	115	131	148	164	180	lb	
				5,510	5,510	5,510	5,510	5,510	5,240	4,490	3,900	3,420	3,030		
				11,020	11,020	11,010	8,050	6,260	5,240	4,490	3,900	3,420	3,030		
164	26,460lb 6x4,410lb	56,7	106,5	33	49	59	79	98	115	131	148	164			
				5,510	5,510	5,510	5,510	5,510	5,510	4,750	4,150	3,640			
				11,020	11,020	11,020	8,490	6,620	5,550	4,750	4,150	3,640			
148	24,255lb 5x4,409lb + 1x2,204lb	58,0	108,8	33	49	59	79	98	115	131	148				
				5,510	5,510	5,510	5,510	5,510	5,510	4,870	4,240				
				11,020	11,020	11,020	8,710	6,790	5,700	4,870	4,240				
131	22,050lb 5x4,409lb	57,6	108,2	33	49	59	79	98	115	131					
				5,510	5,510	5,510	5,510	5,510	5,510	4,850					
				11,020	11,020	11,020	8,660	6,740	5,670	4,850					
115	19,845lb 4x4,409lb + 1x2,204lb	59,0	110,8	33	49	59	79	98	115						
				5,510	5,510	5,510	5,510	5,510	5,510						
				11,020	11,020	11,020	8,880	6,940	5,820						
98	17,640lb 4x4,409lb	61,6	115,7	33	49	59	79	98							
				5,510	5,510	5,510	5,510	5,510							
				11,020	11,020	11,020	9,310	7,280							
79	13,227lb 3x4,409lb	58,1	109,1	33	49	59	79								
				5,510	5,510	5,510	5,510								
				11,020	11,020	11,020	8,730								
			lb												



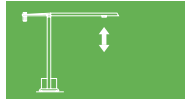


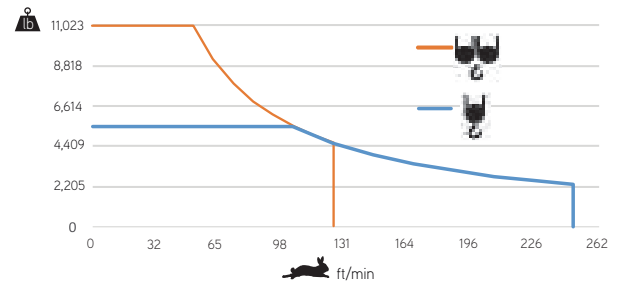
			A (ft)	B (ft)	C (ft)	lb(±5%)
Jib		L55	39.21	3.97	8.53	6,834
		L56	17.06	3.81	6.33	1,301
		L52	17.06	3.81	5.41	1,179
		L53	17.06	3.81	5.41	1,124
		L42b	19.95	3.81	3.97	1,146
		L42c	16.99	3.81	3.97	816
		L43	16.73	3.81	3.97	2x573 1,146
		L45a	6.89	3.81	3.97	265
Head turntable		RS6 RI5	7.38	4.43	6.73	5,820
		P1	5.45	4.00	5.64	1,587
Counter-jib		CL12	39.38	4.10	1.84	5,644
Counterweight		CP2	3.81	1.08	10.30	6x4,410 26,460
		CP3	3.81	0.54	10.30	1x2,205 2,205
Tower section		A5	39.33	3.81	3.81	6,790
		A5	19.93	3.81	3.81	3,660
		A5	10.24	3.81	3.81	2,183
Climbing tower section		A5	10.14	4.54	4.54	2,293
Foundation anchor		A5	4.18	3.81	3.81	992
Base Chassis		A5	18.15	1.64	2.69	2,756
			7.45	1.18	2.69	2x2,161 2,800
TOTAL						5,556
Base Chassis		A5s	13.49	1.64	2.69	3,77
			6.41	1.18	2.69	2x1,279 2,557
TOTAL						5,093







	
	0 a 1 r.p.m. 2x29 ft/lbf
	0 a 196 ft/min 3 kW
	0 a 49 ft/min 2x3 kW

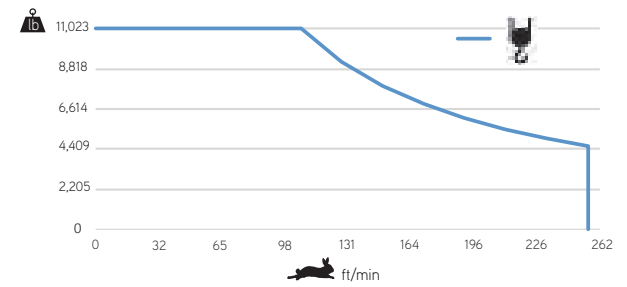



	
	0 a 256 ft/min 15kW





	55 kVA
	400 V +- 5% (50/60 Hz)

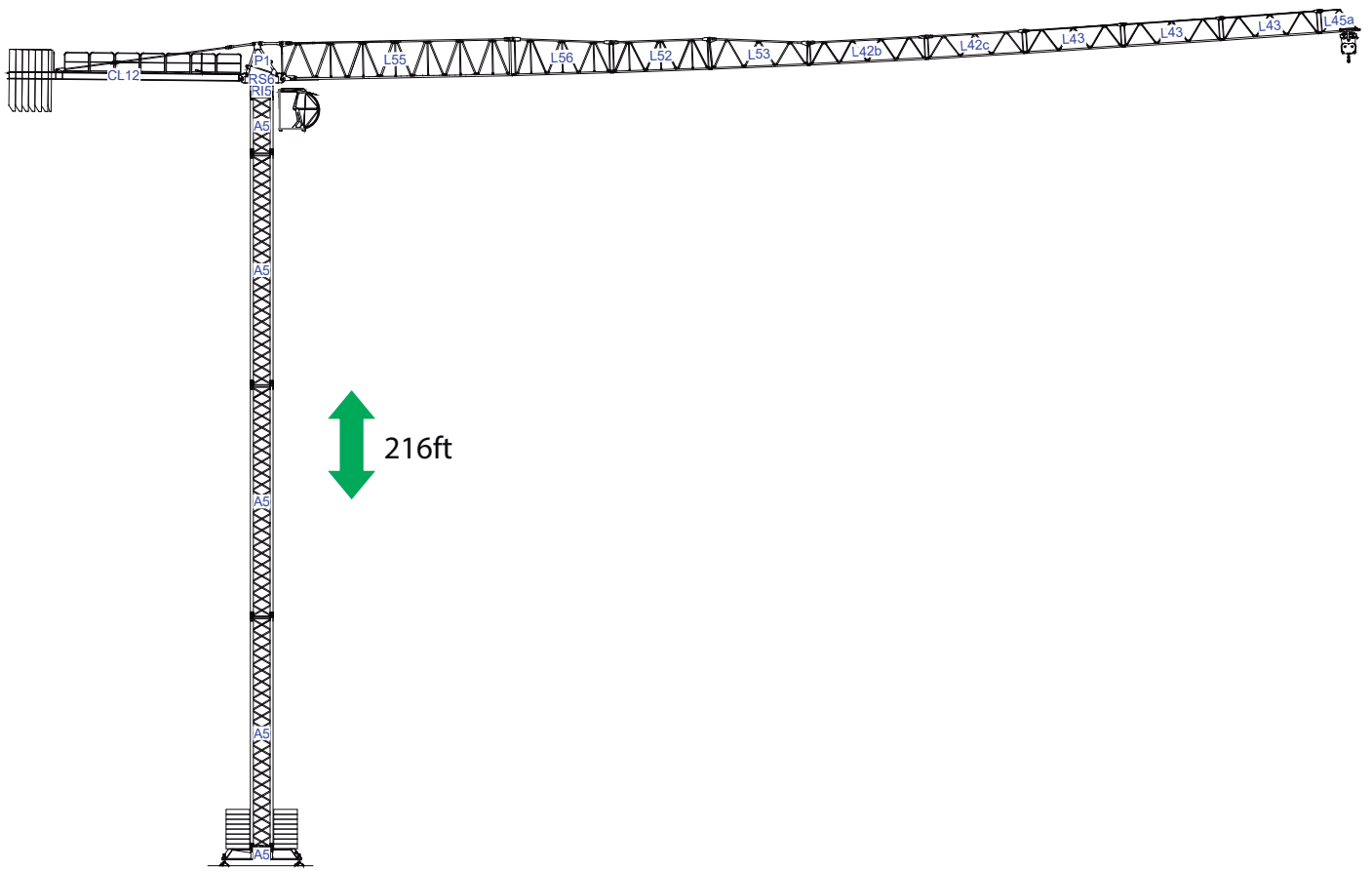
	
	0 a 256 ft/min 30 kW



	55 kVA
	400 V +- 5% (50/60 Hz)

Max height of hoist
 (H)Max. 433ft +  More options





STF 5512

