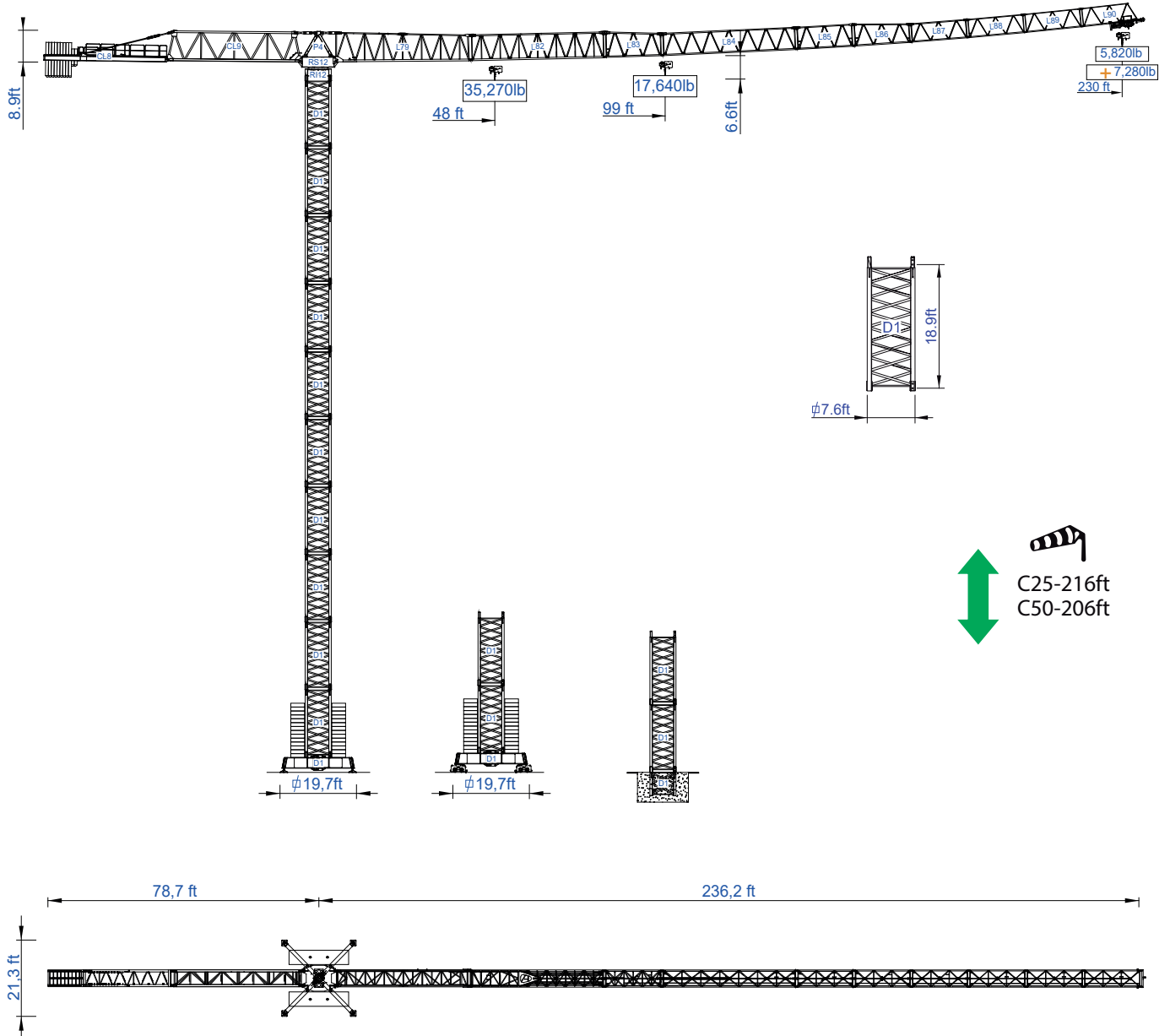




STAFFORD TOWER CRANES

STF 7030

Data Sheet Imperial

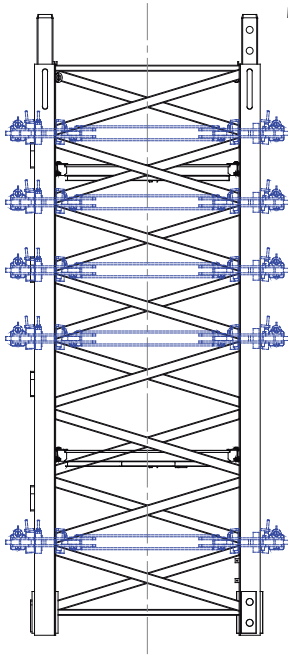



Factory & HQ

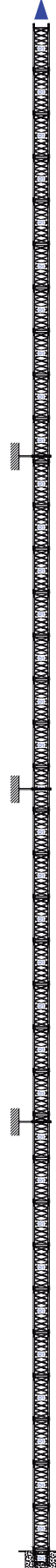
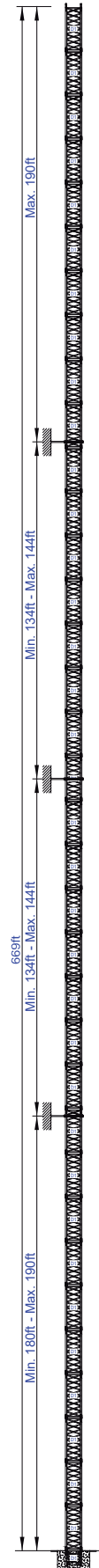
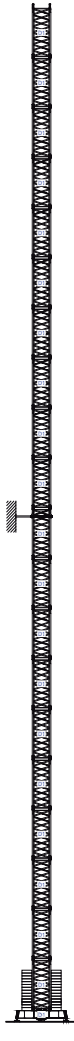
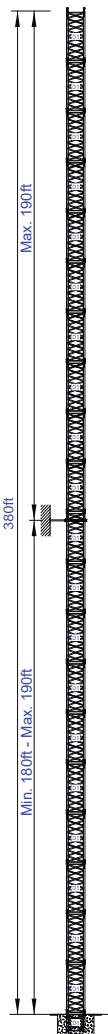
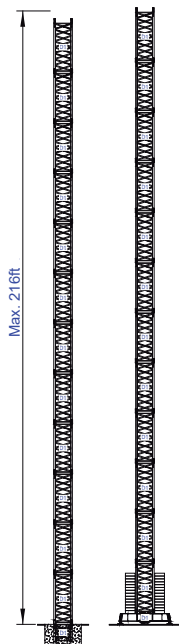
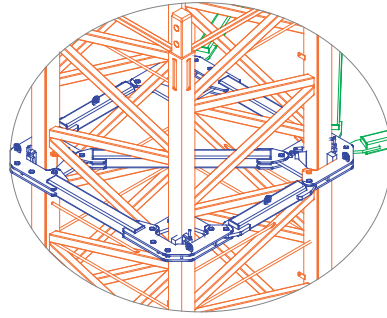
Zona Industrial de Canas de Senhorim - EN 234, 3525-040 Canas de Senhorim - Portugal

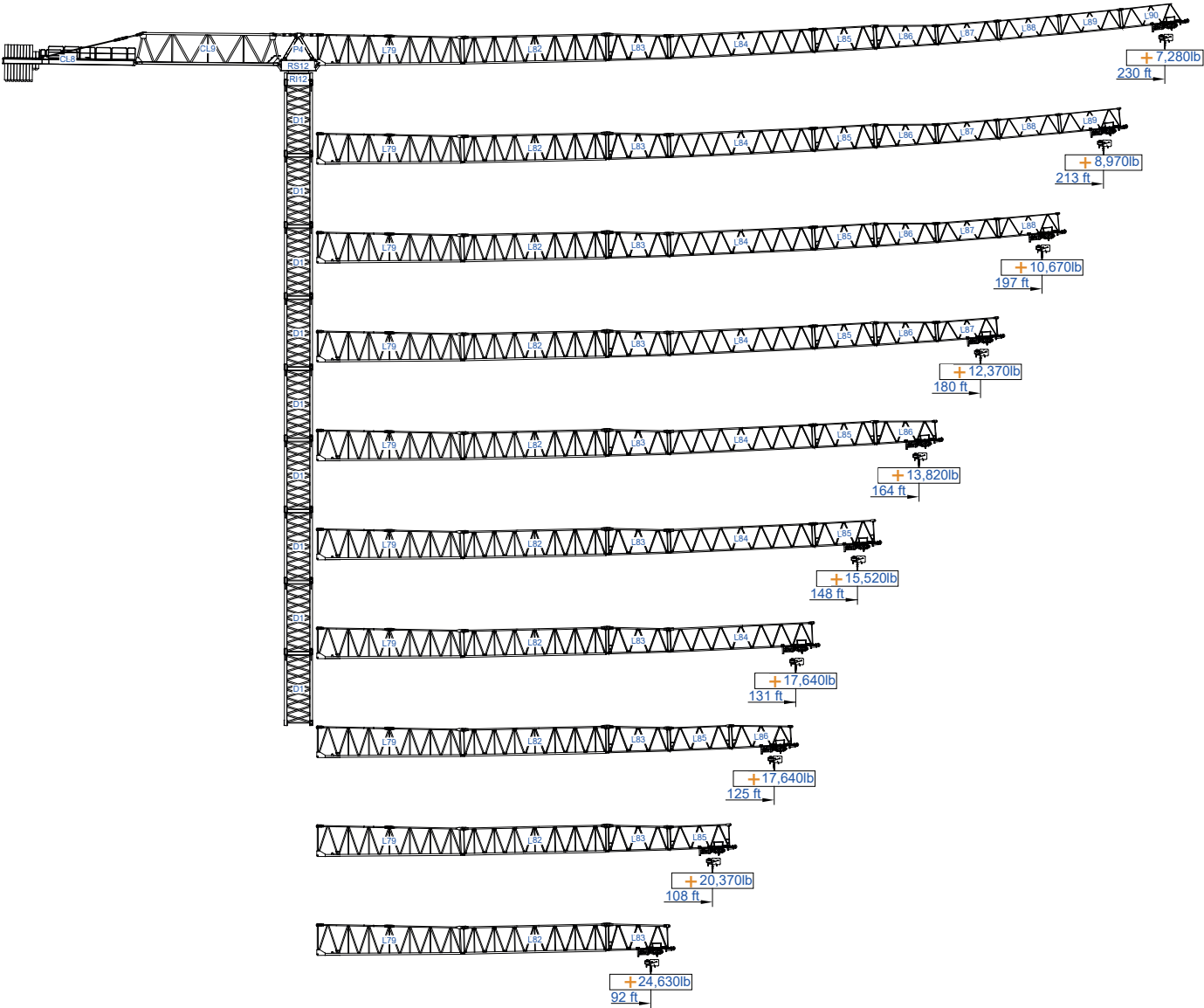
+351 232 673 530 sales@staffordtowercranes.com

staffordtowercranes.com



More options 





SACS 10%



ft																		ft
		35,270lb	17,640lb	33	49	66	82	92	108	125	131	148	164	180	197	213	230	
230	44,100lb 9x4,410lb + 2x2,205lb	50.2	99.2	17.640	17.640	17.640	17.640	17.640	17.610	15.040	14.200	12.390	10.960	9.790	8.800	7.980	7.280	
				35.270	35.270	28.860	22.400	19.640	16.160	13.580	12.740	10.930	9.500	8.330	7.340	6.530	5.820	
213	44,100lb 9x4,410lb + 2x2,205lb	55.2	109.1	17.640	17.640	17.640	17.640	17.640	17.640	16.730	15.790	13.820	12.260	10.960	9.900	8.970		
				35.270	35.270	32.080	24.980	21.960	18.100	15.280	14.330	12.370	10.800	9.500	8.440	7.520		
197	41,895lb 9x4,410lb + 1x2,205lb	58.8	116.3	17.640	17.640	17.640	17.640	17.640	17.640	17.640	16.980	14.860	13.180	11.820	10.670			
				35.270	35.270	34.440	26.870	23.610	19.530	16.510	15.520	13.400	11.730	10.360	9.220			
180	41,895lb 9x4,410lb + 1x2,205lb	61.2	121.0	17.640	17.640	17.640	17.640	17.640	17.640	17.640	17.640	15.540	13.800	12.370				
				35.270	35.270	35.270	28.090	24.710	20.440	17.310	16.270	14.090	12.350	10.910				
164	39,690lb 9x4,410lb	61.3	121.2	17.640	17.640	17.640	17.640	17.640	17.640	17.640	17.640	15.560	13.820					
				35.270	35.270	35.270	28.130	24.760	20.500	17.350	16.310	14.110	12.370					
148	35,280lb 8x4,410lb	61.1	120.8	17.640	17.640	17.640	17.640	17.640	17.640	17.640	17.640	15.520						
				35.270	35.270	35.270	28.040	24.670	20.410	17.280	16.250	14.070						
131	33,075lb 7x4,410lb + 1x2,205lb	61.1	120.8	17.640	17.640	17.640	17.640	17.640	17.640	17.640	17.640							
				35.270	35.270	35.270	28.040	24.670	20.410	17.280	16.250							
125	30,870lb 7x4,410lb	60.9	120.4	17.640	17.640	17.640	17.640	17.640	17.640	17.640								
				35.270	35.270	35.270	27.930	24.580	20.350	17.220								
108	26,460lb 6x4,410lb	61.0	120.6	17.640	17.640	17.640	17.640	17.640	17.640									
				35.270	35.270	35.270	27.980	24.630	20.370									
92	24,255lb 5x4,410lb + 1x2,205lb	61.0	120.0	17.640	17.640	17.640	17.640	17.640										
				35.270	35.270	35.270	27.980	24.630										







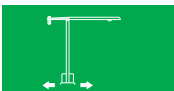
			A (ft)	B (ft)	C (ft)	lb
Jib / Lança / Fleche / Braccio		L79	39.30	5.10	8.40	20,500
/ Ausleger / кливер		L82	39.40	4.80	7.50	8,160
		L83	17.30	4.80	7.30	2,870
		L84	39.30	4.80	6.40	4,850
		L85	17.10	4.80	6.40	1,760
		L86	17.00	4.80	6.30	1,430
		L87	17.00	4.80	5.30	1,150
		L88	16.90	4.80	6.20	880
		L89	16.90	4.80	5.20	770
		L90	16.60	4.80	5.20	880
	Head turntable / Cabeçote / Pivot / Testa giradischi / Kopfplattenspieler		RS12 RI12	11.30	7.20	7.60
		P4	8.50	4.80	3.40	3,970
Counter-jib / Contra lança / Contre-fleche		CL9	38.50	4.80	8.60	11,820
		CL8	35.80	4.70	2.20	5,730
Counterweight / Contrapeso / Contrepoids / Gegengewicht / Противовес		CP4	5.20	0.80	5.20	2x2,205 4,410
		CP5	3.30	0.80	11.20	9x4,410 36,690

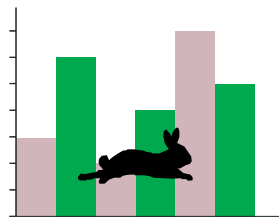
			A (mm)	B (mm)	C (mm)	kg
Tower section / torre / Coupe tour / Sezione torre / Turmabschnitt / Секция башни		D1	20.50	7.60	7.60	10,030
		D1	11.00	7.60	7.60	5,690
Foundation anchor / Tramo encastrar /		D1	8.20	7.60	7.60	4,410



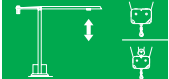

Base Chassis		D1	28.60	2.60	5.20	12,130
			13.80	1.20	5.20	2x6,120 12,240
						24,370

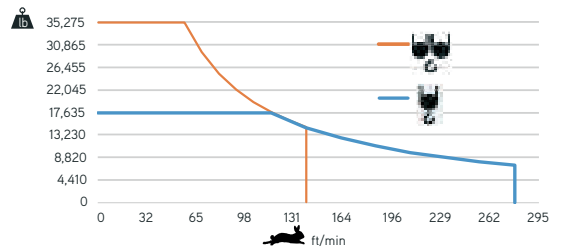
Climbing tower section		TL1	9.30	8.50	7.50	5,880
Climbing cage		TL3	39.20	1.00	8.40	8,050
		TL3	39.20	0.80	8.40	2x4,490 8,980
		TL4	15.60	0.90	8.40	3,310




	
	0 a 1 r.p.m. 3x6,5 daN.m
	0 a 196 ft/min 7,5 kW
	0-32 ft/min 4x5,5 kW

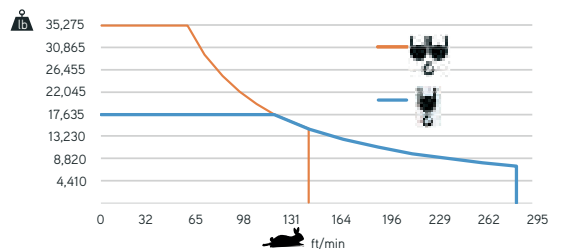



	
	0 a 278 ft/min
	0 a 139 ft/min
55 kW	





	100 kVA
400 V +- 5% (50/60 Hz)	


	
	0 a 347 ft/min
	0 a 174 ft/min
75 kW	



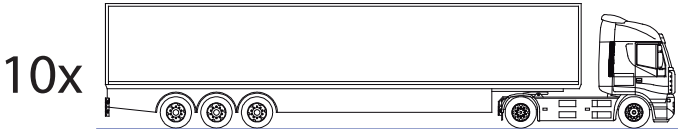
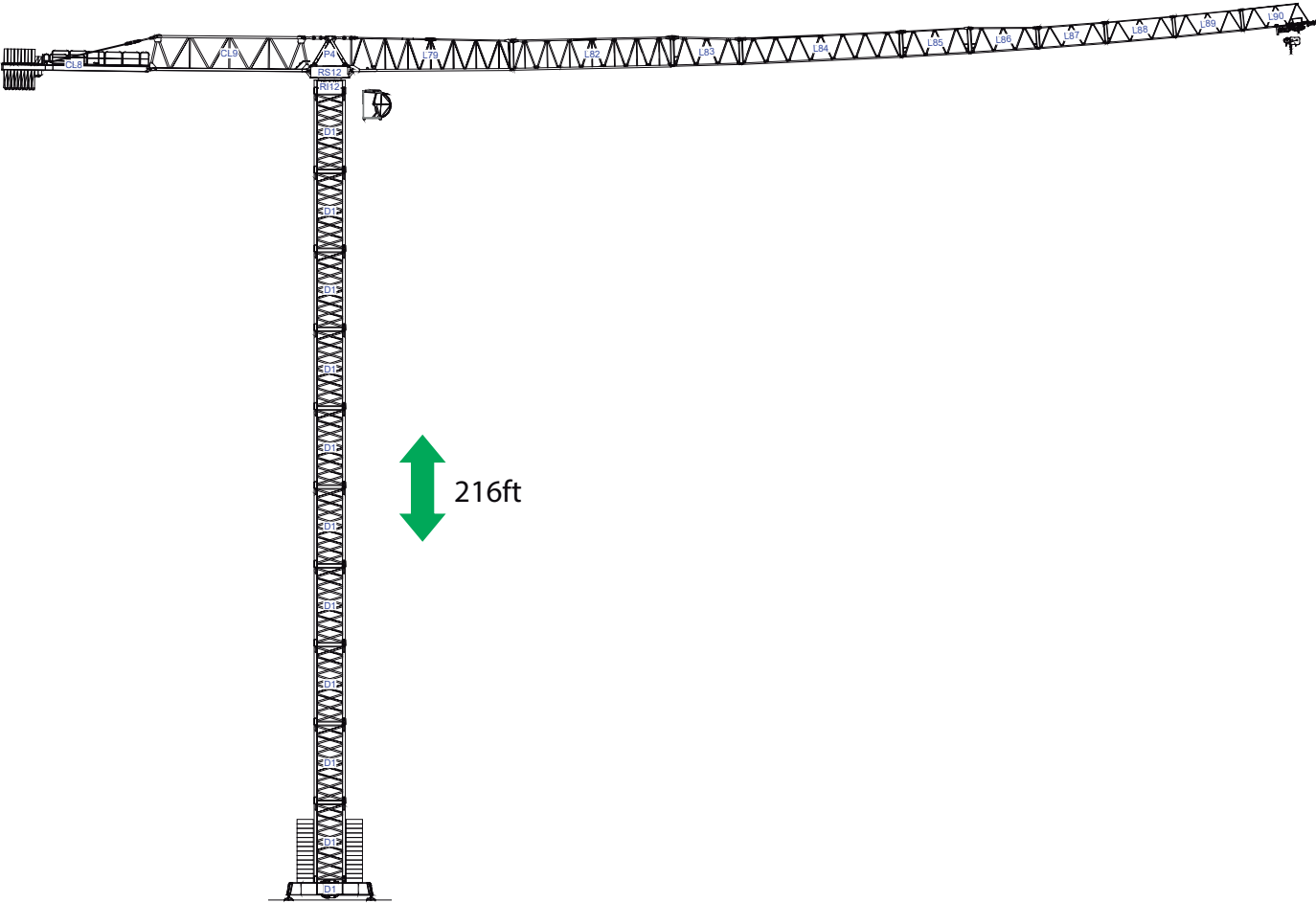
	130 kVA
400 V +- 5% (50/60 Hz)	

Max height of hoist

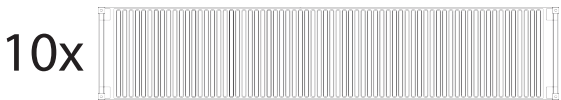
 (H)Max. 266 ft
 (H)Max. 532 ft

 +  More options





/

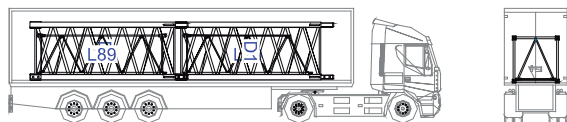


40' High Cube

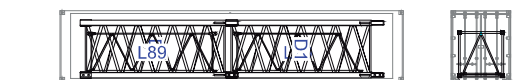


STF 7030

1

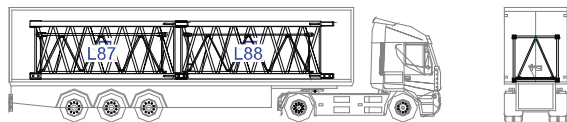


2xD1-L89-L90

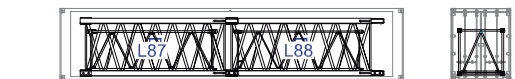


2xD1-L89-L90

2

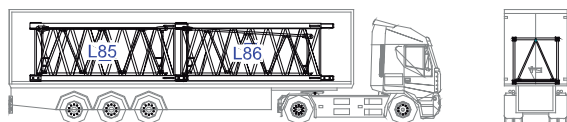


2xD1-L87-L88



2xD1-L87-L88

3

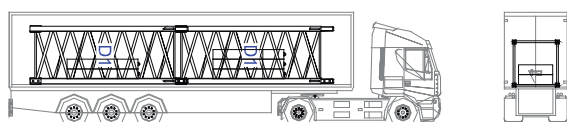


2xD1-L85-L86

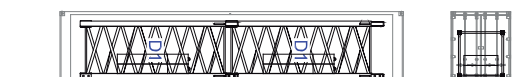


2xD1-L85-L86

4

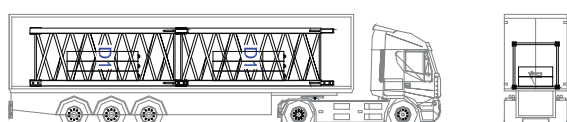


2xD1-2xCP5-1xCP4

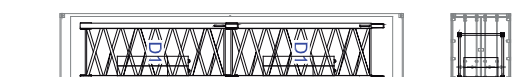


2xD1-2xCP5-1xCP4

5

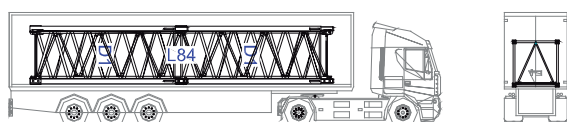


2xD1-2xCP5-2xCP4

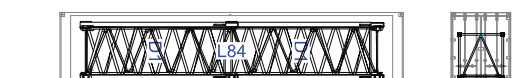


2xD1-2xCP5-2xCP4

6

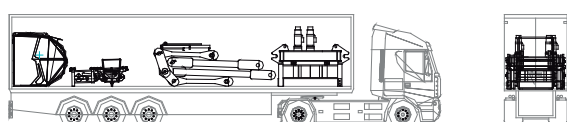


2xD1-L84

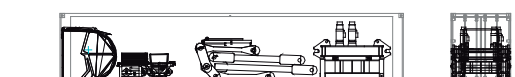


2xD1-L84

7

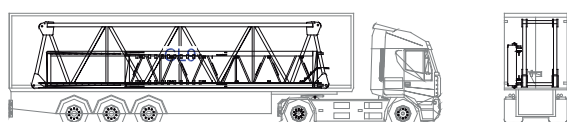


P4-RS12-RI11-CB1-TP2-TS2

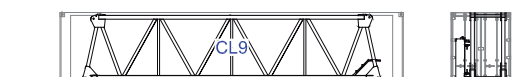


P4-RS12-RI11-CB1-TP2-TS2

8

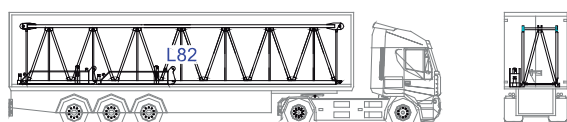


CL9-CL8



CL9-CL8

9

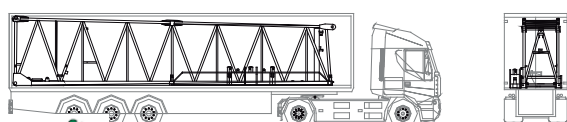


L82-2XCH.D1



L82-2XCH.D1

10



L79-CH.D1



L79-CH.D1



