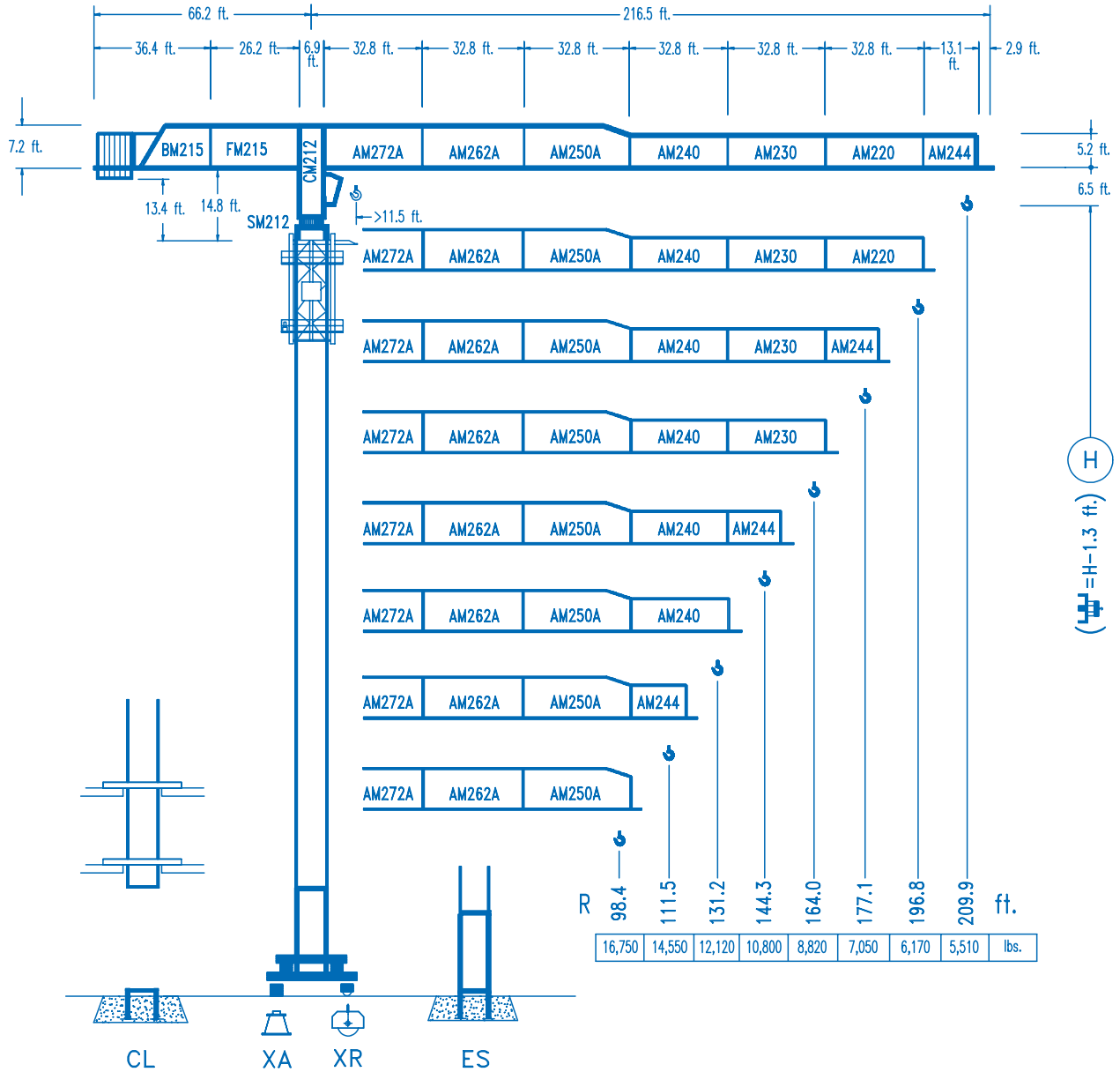


LINDEN 2100

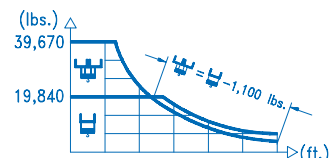
21 LC 210

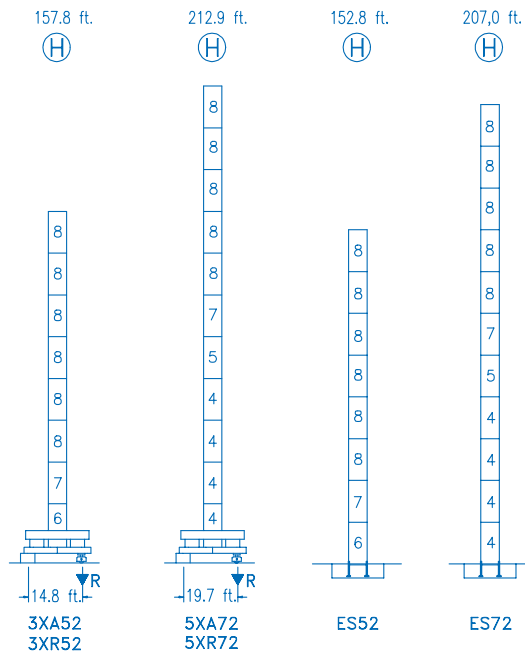
39,670 lbs.



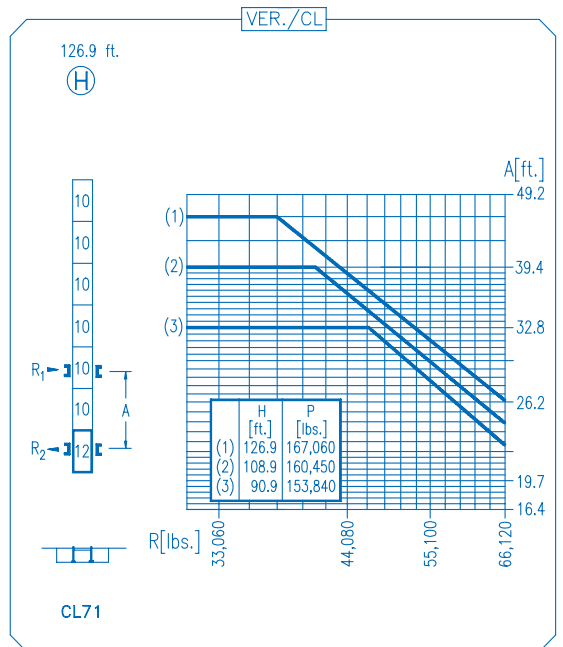
CE
DIN 15018 H1 B3

R																												
209.9	38.4	49.2	68.9	69.2	82.0	98.4	111.5	131.2	144.3	164.0	177.1	196.8	209.9	ft.	39,670	29,650	19,840	19,840	16,440	13,380	11,610	9,640	8,640	7,430	6,780	5,960	5,510	lbs.
196.8	39.0	49.2	70.5	71.2	82.0	98.4	111.5	131.2	144.3	164.0	177.1	196.8	ft.	39,670	30,330	19,840	19,840	16,950	13,810	11,990	9,960	8,910	7,680	7,010	6,170	lbs.		
177.1	39.0	49.2	70.2	71.5	82.0	98.4	111.5	131.2	144.3	164.0	177.1	ft.	39,670	30,220	19,840	19,840	17,050	13,900	12,070	10,020	8,970	7,720	7,050	lbs.				
164.0	43.0	49.2	65.6	77.4	80.0	98.4	111.5	131.2	144.3	164.0	ft.	39,670	33,790	24,110	19,840	19,840	15,740	13,670	11,380	10,210	8,820	lbs.						
144.3	44.6	49.2	65.6	80.4	84.0	98.4	111.5	131.2	144.3	ft.	39,670	35,250	25,190	19,840	19,840	16,610	14,450	12,030	10,800	lbs.								
131.2	44.6	49.2	65.6	80.4	84.3	98.4	111.5	131.2	ft.	39,670	35,270	25,210	19,840	19,840	16,730	14,540	12,120	lbs.										
111.5	43.9	49.2	65.6	79.7	84.3	98.4	111.5	ft.	39,670	34,910	24,940	19,840	19,840	16,720	14,550	lbs.												
98.4	43.9	49.2	65.6	79.0	84.6	98.4	ft.	39,670	34,700	24,780	19,840	19,840	16,750	lbs.														





N	Ref.	∅	h
4	S25	6.6	18.0
5	TS25	6.6	18.0
6	S24	6.6	18.0
7	TS24	6.6	18.0
8	S23	6.6	18.0
10	S15	5.2	18.0
12	CLS15	5.2	10.2



R. máx. En servicio
In operation
En service
In Betrieb

3XR52 198,580 lbs.
5XR72 210,920 lbs.

R. máx. Fuera de servicio
Out of service
Hors service
Ausser Betrieb

3XR52 208,060 lbs.
5XR72 295,340 lbs.

CFU-7.5
10 hp.

0 ⇄ 308 ft./min

GR-12
2 x 88 ft.lbs.

0 ⇄ 0.8 rpm

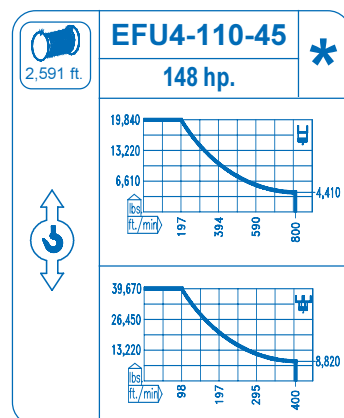
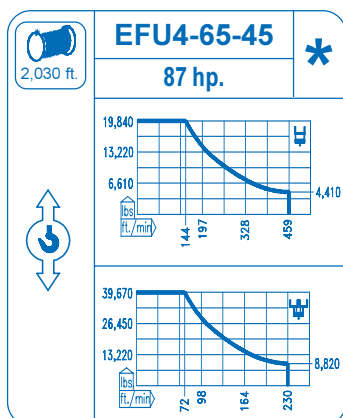
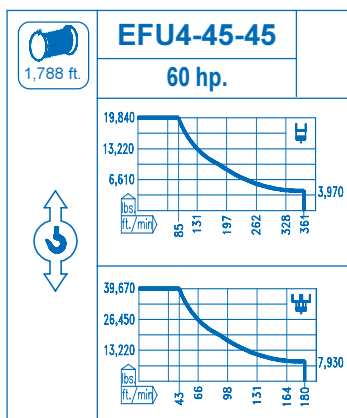
TRA-7.5
2 x 55 ft.lbs.

0 ⇄ 78 ft./min

TRA-7.5VC
2 x 55 ft.lbs.

0 ⇄ 78 ft./min

5XR72



Tensión de alimentación
Operating voltage
Tension de service
Betriebsspannung

480 V
3 ph
60 Hz

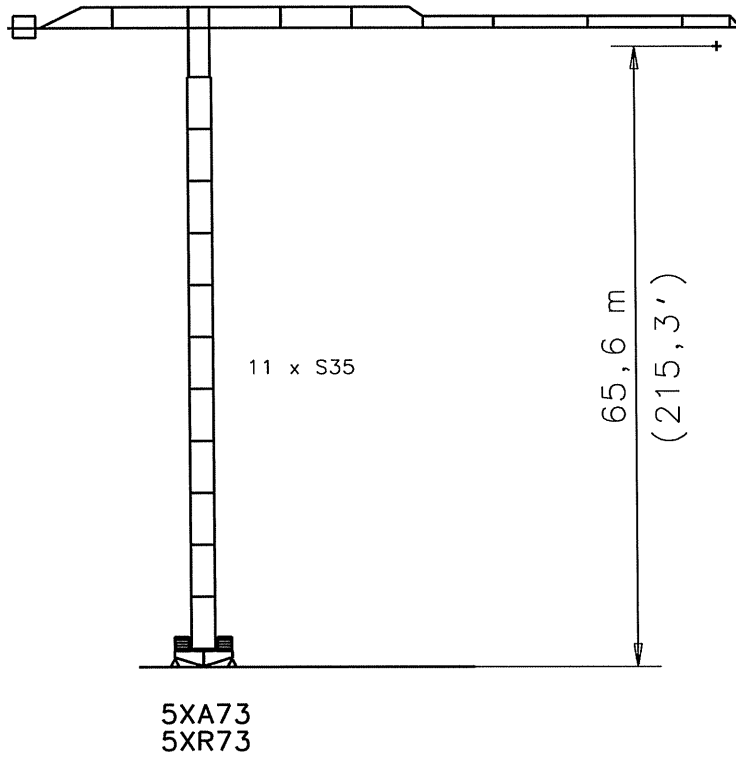
Opcional
Optional
En option
Kaufoption



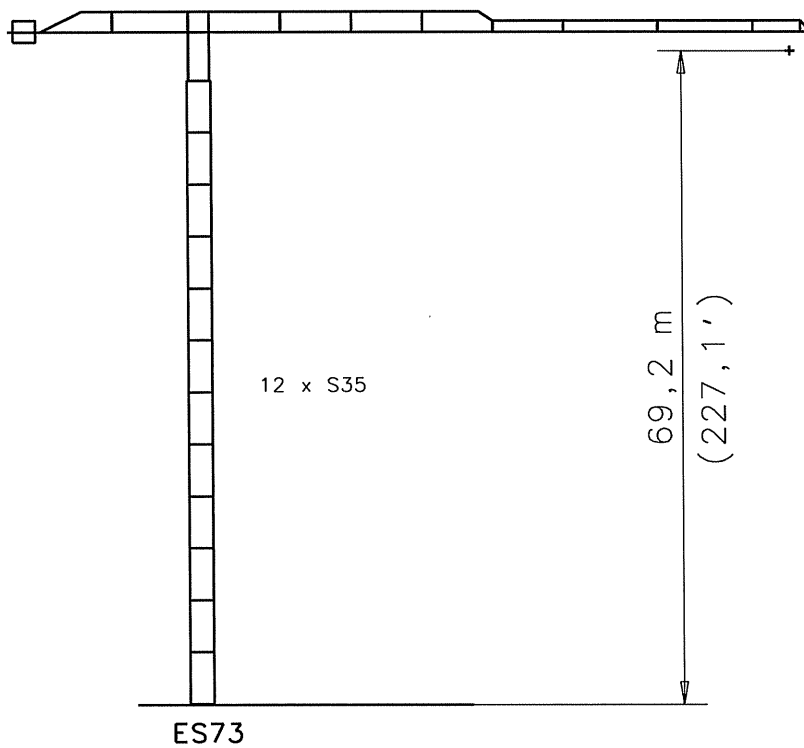
COMANSA

21LC210/18 t

21LC210/39,680 lbs.



APROBADO



3220-10180
12-03-2007